



# AMG9IM/HM Series Unmanaged Ethernet Switch Quick Start Guide

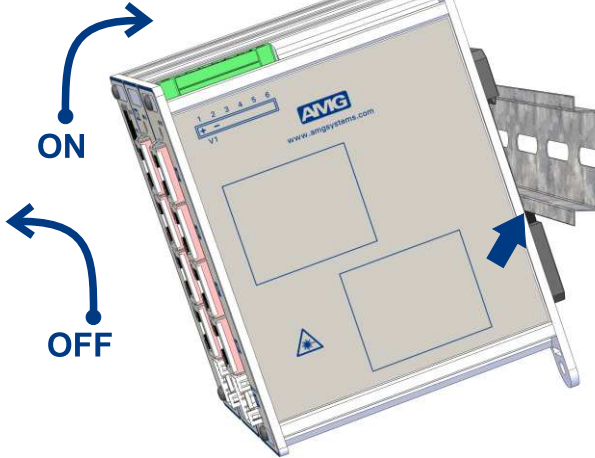


1

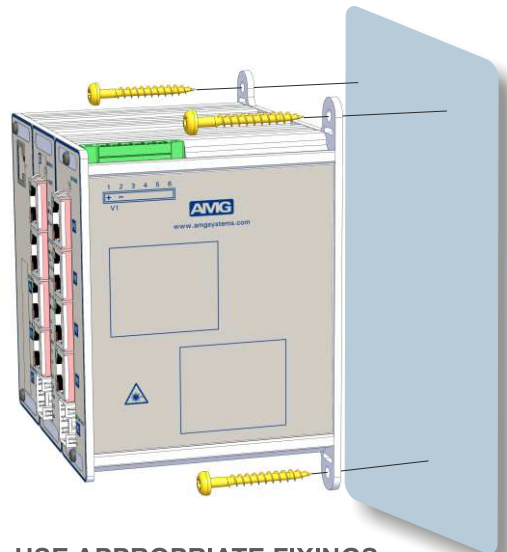
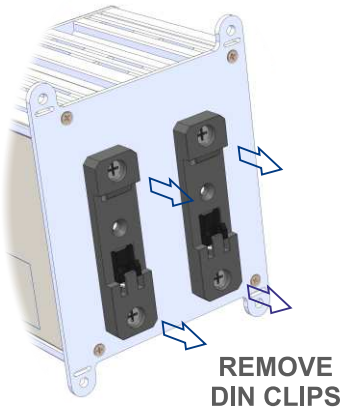
# FIXINGS



## DIN RAIL



## HARD SURFACE MOUNT

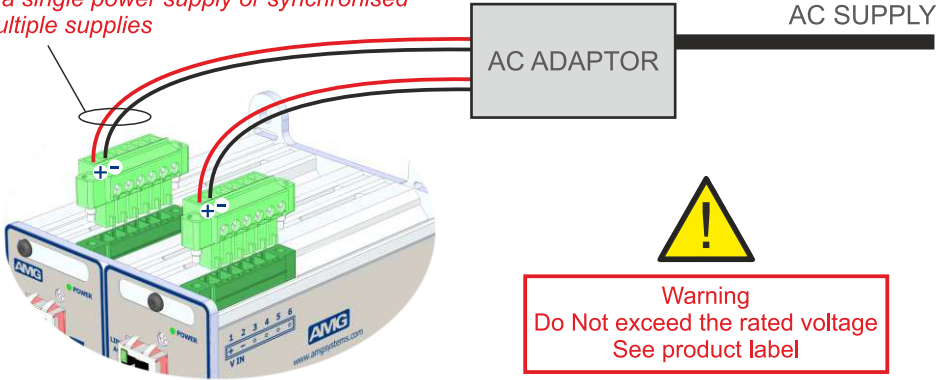


USE APPROPRIATE FIXINGS  
(not supplied)

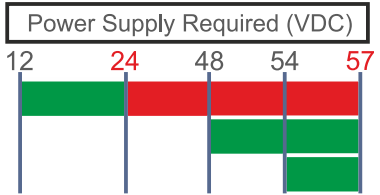
# 2

## POWER CONNECTIONS

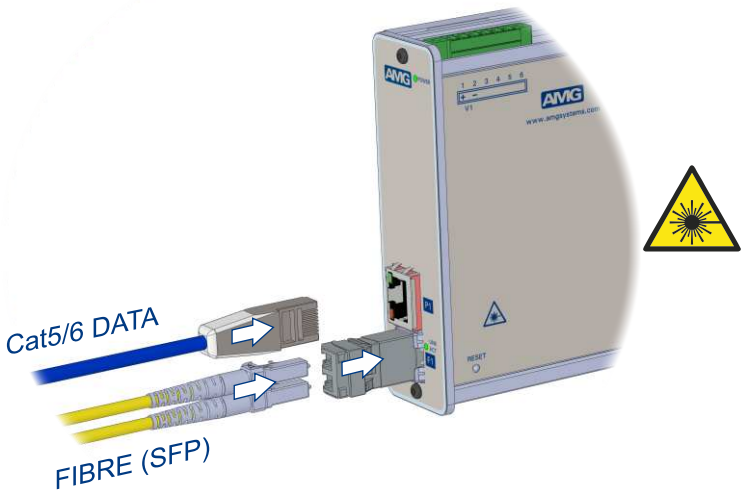
Some PoE equipped models have multiple power connectors. These must be connected to a single power supply or synchronised multiple supplies



Non PoE Models		3 - 20W*
Powered Device	PoE (af)	15W**
	PoE+ (at)	30W**



\* 1 to 16 Port  
\*\* Per Port



MODEL	ETHERNET	SFP	Operating Temperature
AMG9IMU-xF-xS	100 Base	100 Base	-10°C to 60°C
AMG9HMU-xG-xS	100/1000 Base	100/1000 Base	-10°C to 60°C
AMG9IMU-xH-xS	100 Base	100 Base	-40°C to 75°C
AMG9HMU-xGH-xS	100/1000 Base	100/1000 Base	-40°C to 75°C

### All Models

#### Power Supply:

Non PoE.....12 - 24VDC

PoE..... 48 - 57VDC (DC Isolated)

PoE+..... 54 - 57VDC (DC Isolated)

#### Power Requirement:

Non PoE ..... 3 to 20 Watts max

PoE ..... + 15 Watts\* max (12.5W max load)

PoE+..... + 30 Watts\* max (25W max load)

*\* Per channel*

#### Physical:

Mounting.....DIN Rail or Surface Mount

Dimensions.... A x 85 x 112mm (W x D x H)

Weight.....B

Case Style    7HP        14HP        21HP        28HP

**A**    35mm    71mm    107mm    142mm

**B**    300g    500g    700g    900g

#### Environmental:

Operational Temperature.....See table above

Storage Temperature..... -40°C to 80°C

Humidity.....5% to 90% (non-condensing)

#### Approvals:

CE, RoHS

