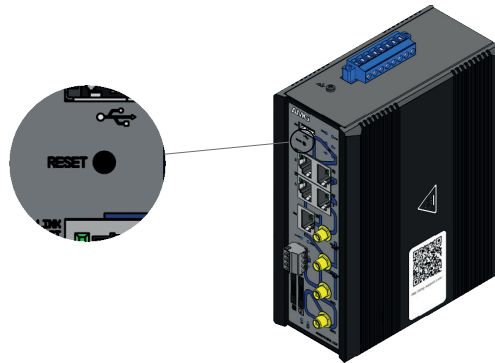


## / DEVICE RESET PROCEDURE

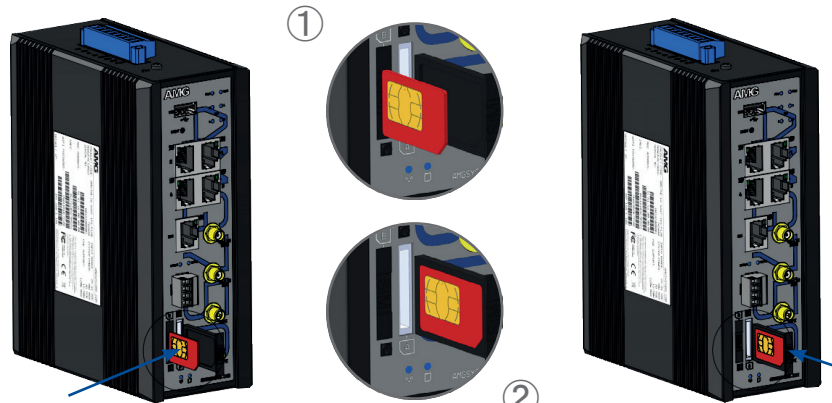
With the unit powered up press and hold the RESET button for 6 seconds, and then release it. The unit will reboot and restore the factory default settings.



SCAN ME



## / INSTALLING THE CELLULAR SIM CARD(S)



If using only 1 SIM card always install it into slot A

## / CONNECTING TO THE WEB GUI



Default IP Address:	192.168.1.101
Username:	Admin
Password:	Admin
WiFi SSID:	Staff
WiFi Password:	See Label On Unit



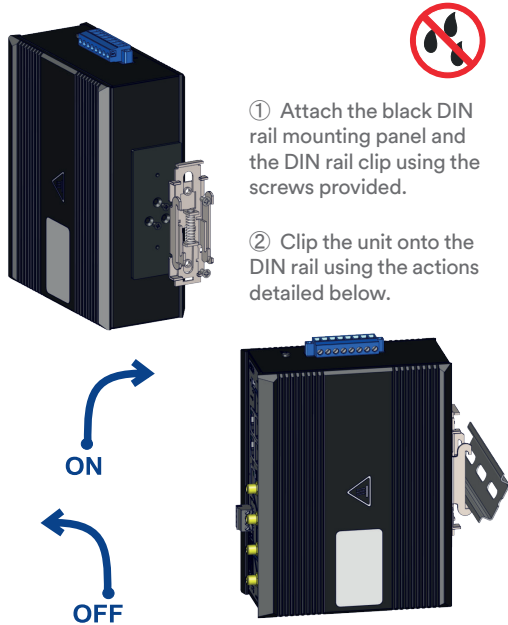
[amg-support.com/AMG750-Series](http://amg-support.com/AMG750-Series)

To access the full software user guide for this product please visit the product page using the QR code above or the direct link opposite.

# AMG750 Series Industrial 4G Cellular Router

Installation Manual - Hardware

### / DIN RAIL MOUNT INSTALLATION



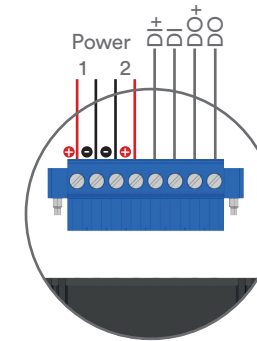
- ① Attach the black DIN rail mounting panel and the DIN rail clip using the screws provided.
- ② Clip the unit onto the DIN rail using the actions detailed below.

### / SURFACE MOUNT INSTALLATION



- ① Attach the black wall mounting plate using the screws provided.
- ② Fix the unit to the surface using two appropriate screws (screws not provided)

### / POWER



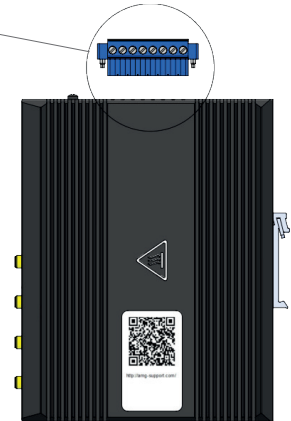
Model	Voltage	Power
Non-PoE Models	12-56 VDC	15.6W Max
PoE Models	24-56 VDC Voltage Booster	15.6W Max*

\*Excludes PoE Load

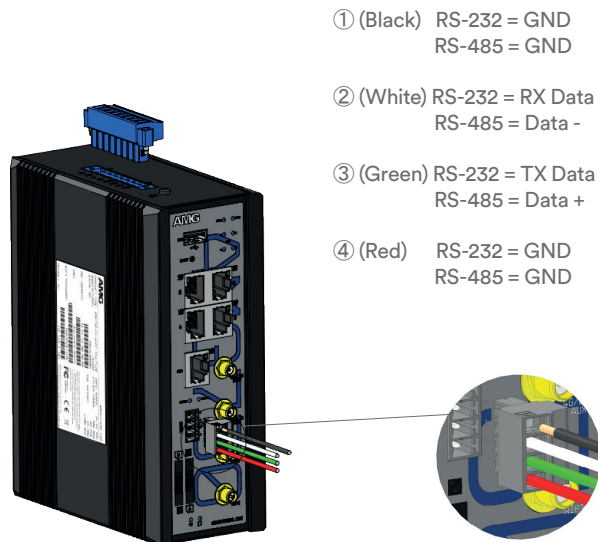
DI - Digital Input Logic 0: 0~2V, Logic 1: 5~30V  
DO - Relay Output 30V @ 1A Max  
(For further details please refer to the main installation manual available on the AMG website)



**Warning**  
Do not exceed the rated voltage  
Refer to product label

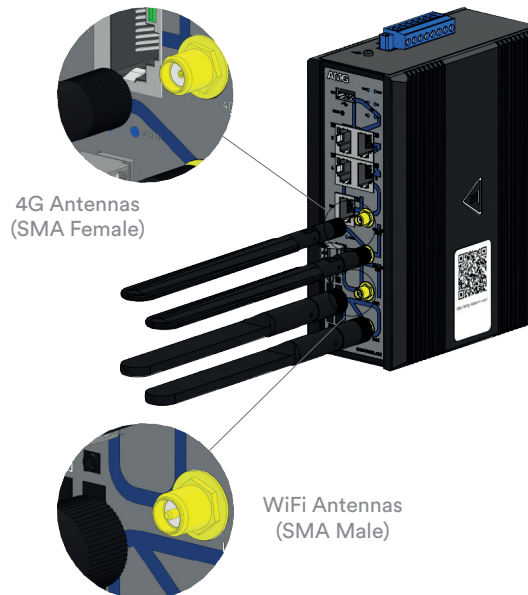


### / SERIAL DATA CONNECTIONS



- ① (Black) RS-232 = GND  
RS-485 = GND
- ② (White) RS-232 = RX Data  
RS-485 = Data -
- ③ (Green) RS-232 = TX Data  
RS-485 = Data +
- ④ (Red) RS-232 = GND  
RS-485 = GND

### / ANTENNA CONNECTIONS



4G Antennas  
(SMA Female)

WiFi Antennas  
(SMA Male)

### / LED INDICATORS

LED	Colour	Description
PWR 1 / 2	Blue	DC input present on power 1 / 2
STATUS	Blue	Device is running normally
SERIAL	Blue	Serial data in operation
POE 1-4	Blue	PoE is being delivered on the port
WIFI 2.4G	Blue	WiFi is operating at 2.4GHz
WIFI 5G	Blue	WiFi is operating at 5GHz
CELL WAN	Blue	Cellular is operating as a WAN interface
CELL SIG	Blue	Cellular signal good
RJ45 LINK/ACT	Green	Ethernet link present (flashes with data traffic activity)
	Blue	WiFi is enabled
	Blue	Fast Flash = Cellular Signal 0~30% Slow Flash = Cellular Signal 31~60% Solid = Cellular Signal 61~100%