

AMG172-DS Series Industrial VDSL2 Ethernet Extender

Installation Manual - Hardware

AMG172

AMG Systems Ltd. 3 The Omega Centre, Stratton Business Park, Biggleswade, SG18 8QB, UK
T :: +44 (0) 1767 600 777 E :: sales@amgsystems.com
D39182-01 www.amgsystems.com

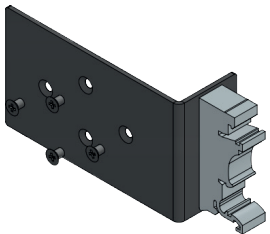
AMG

AMG
www.amgsystems.com

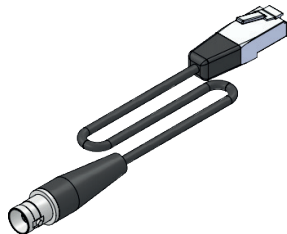
/ AMG172 SERIES INCLUDED ACCESSORIES



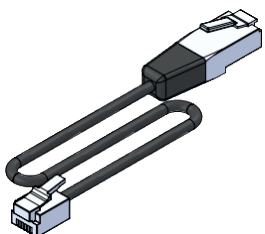
AMG172-1G-1V



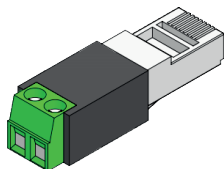
Side Mount DIN Rail Bracket



RJ45 to Coax Adapter

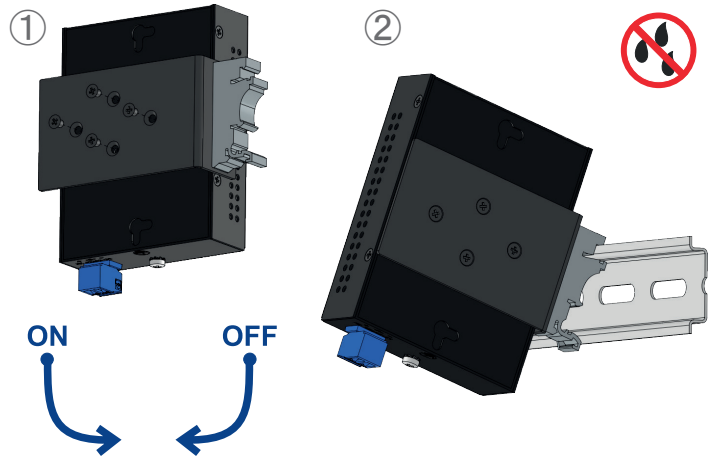


RJ45 to RJ11 Adapter



RJ45 to 2-Wire Adapter

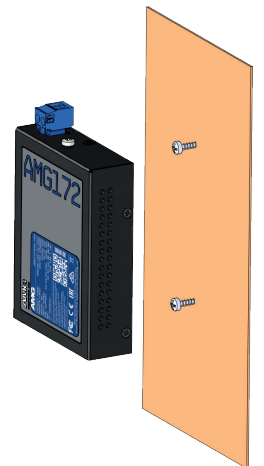
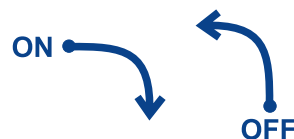
/ DIN RAIL MOUNT INSTALLATION



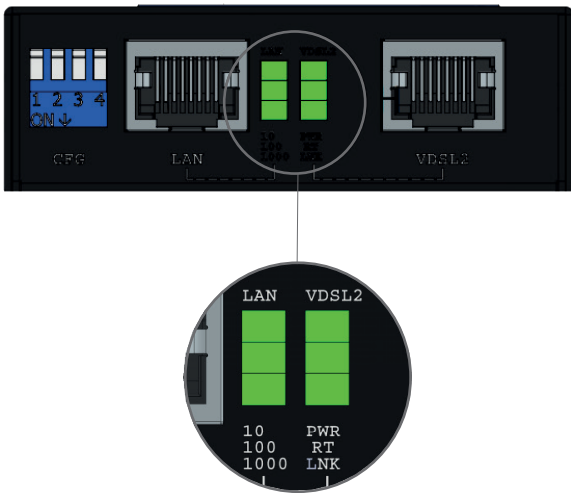
/ SURFACE MOUNT INSTALLATION

① Fix 2 x 3MM screws into the surface (for location please refer to product dimensional drawing).

② Position unit onto the screws and then push down to lock into position.

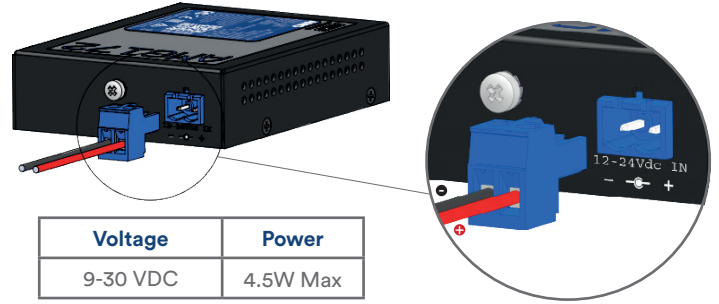


LED INDICATORS



LED	Colour	Description
PWR	Green	DC input present
RT	Off	Unit in Central mode (Master)
	Green	Unit in Remote mode (RT)
LNK	Blinking	Slow: VDSL2 link idle Fast: VDSL2 link training or data transmitting
	Green	VDSL2 link up
10	Green	Ethernet link at 10 Mbps speed
100	Green	Ethernet link at 100 Mbps speed
1000	Green	Ethernet link at 1 Gbps speed

POWER



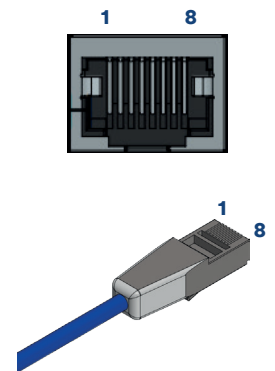
Please ensure the unit is correctly earthed using the earth connection provided to maintain surge protection



Warning
Do not exceed the rated voltage. Refer to product label

VDSL2 RJ45 PORT PIN ASSIGNMENTS

Pin Number	Description
1	Not Used
2	Not Used
3	Not Used
4	VDSL2 Data
5	VDSL2 Data
6	Not Used
7	Not Used
8	Not Used



DIP SWITCH SETTINGS

The DIP switches provide 8 user configurable profile settings in order to meet the needs of different installations & environments.

NOTE
There are 4 white DIP switches. When the white switch is in the UP position its function is OFF. When the white switch is in the DOWN position its function is ON.



Role	DIP Switch	Symmetrical / Asymmetrical	G.INP / Interleaved Mode	Target SNR Margin (dB)	Max Data Rate C-RT / RT-C (Mbps)	
Central (Master)		Symmetrical	G.INP	8	160 / 160	
		Asymmetrical	G.INP	8	220 / 110	
		Symmetrical	Interleaved	6	160 / 160	
		Asymmetrical	Interleaved	6	220 / 110	
		Symmetrical	G.INP	12	150 / 150	
		Asymmetrical	G.INP	12	220 / 100	
		Symmetrical*	(Forcing 30a Profile to Link, & Disable Band 0 to 2.2MHz)	G.INP	24	20 / 20
		Asymmetrical	(Standard Profile Annex A 17a-cu32)	Interleaved	6	150 / 50
Remote (RT)		Remote Unit (RT) Will Always Follow The Settings of The Central Unit (Master) When The Unit Operates In Remote (RT) Mode, DIP Switches 2, 3 & 4 Have No Function				

* Special Profile Setting For Poor Environments and/or Poor Quality Cable

EXAMPLE CONNECTIONS (Other Options Possible)

